



Lake Babine Nations Forestry Ltd.

Woodlot Licence Plan Map 2026

W1764 - Schedule A

Mapsheet: 93M.009
 Operating Area: Granisle
 Forest Region: Skeena
 Forest District: Nadina
 Latitude: 55° 02' 25" N
 Longitude: 126° 20' 21" W

Base Data

- Forest Cover
- Contour
- Ocean/Lake
- Wetland
- BEC

Resource Management

- Parks (Protected Areas)
- Indian Reserves
- Woodlot
- Retention (VQO)
- Partial Retention (VQO)
- Recreation Site
- Recreation Trail
- Fish Sensitive Watershed
- Community Watershed
- Private Land
- UWR - Approved
- WHA - Approved
- OGMA - Approved
- Landscape Unit
- Potential Mountain Goat Habitat
- Sensitive Soils Slope > 60%

Access Management

- Existing Road
- Overgrown Road
- Transmission Lines
- Railways
- Oil and Gas Pipeline

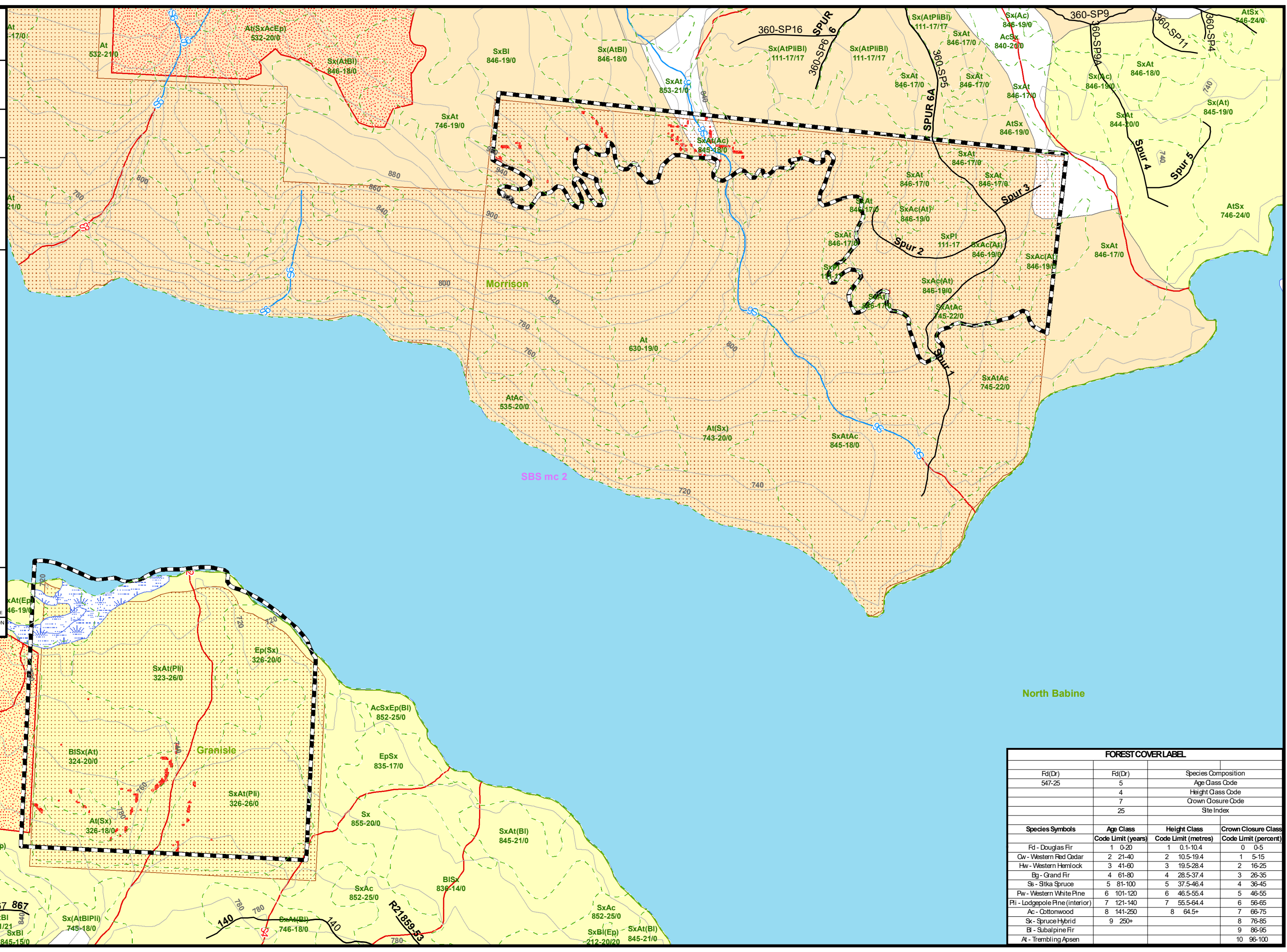
Riparian Information

- Fish Stream
- Non-Fish Stream
- TRIM Streams
- Riparian Management Zone
- Riparian Reserve Zone

Water Infrastructure

- Current Water Rights License
- Abandoned Water Rights License
- Unlicensed Private/Domestic Well

Scale: 1:15,000
 Date: April 29, 2026
 Map Coordinates: UTM Nad 83 Zone 9N
 Projection: BC Environment Albers



FOREST COVER LABEL			
Fd(Dr)	Fd(Dr)	Species Composition	
547-25	5	Age Class Code	
	4	Height Class Code	
	7	Crown Closure Code	
	25	Site Index	
Species Symbols	Age Class	Height Class	Crown Closure Class
	Code Limit (years)	Code Limit (metres)	Code Limit (percent)
Fd - Douglas Fir	1 0-20	1 0.1-10.4	0 0-5
Ow - Western Red Cedar	2 21-40	2 10.5-19.4	1 5-15
Hw - Western Hemlock	3 41-60	3 19.5-28.4	2 16-25
Bg - Grand Fir	4 61-80	4 28.5-37.4	3 26-35
Ss - Sitka Spruce	5 81-100	5 37.5-46.4	4 36-45
Pw - Western White Pine	6 101-120	6 46.5-55.4	5 46-55
Pl - Lodgepole Pine (interior)	7 121-140	7 55.5-64.4	6 56-65
Ac - Cottonwood	8 141-250	8 64.5+	7 66-75
Sk - Spruce Hybrid	9 250+		8 76-85
Bl - Subalpine Fir			9 86-95
At - Trembling Aspen			10 96-100